



Frigga® V5 Series V5(5)-Pro-(Li) Real-time Monitor (Multi-use)



Frigga®V5(5)-Pro-(Li) is a new technological innovation of Frigga. The product is able to monitor ultra-low temperature, with probe temperature range -200°C to +100°C. In addition, it offers revolutionary location experience, with accuracy range $\pm 10m$, providing customers hyper-accurate location during shipments transit.

With Frigga®V5(5)-Pro-(Li), clients will get full picture of shipment conditions, including dual temperature, light, shock, acceleration, tilt, motion status, location and receive immediate alarms in real-time if things go wrong, enabling timely corrective actions to reduce losses.

Integrating self-developed Frigga® Track APP and Frigga® IoT Cloud Platform, clients can easily check and get all the shipment data anywhere at any time they want.

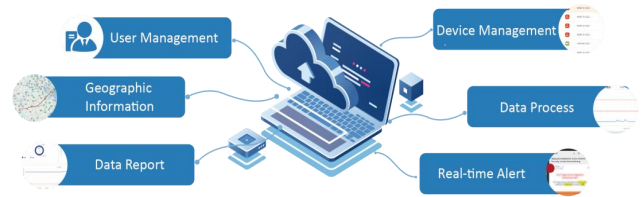
Key Features and Advantages

- Ultra-low temperature monitoring, probe temperature range -200°C to +100°C
- 5-Modal positioning technology, includes Satellite/GPS (GPS, BeiDou, GLONASS), A-GNSS, self-developed mixed LBS, Wi-Fi Position, location accuracy $\pm 10m$
- 3-axis acceleration detection and analysis, with the range of 0-16G
- 8-level shock detection and analysis
- 3-axis tilt detection and analysis, Resolution 0.1°
- Motion status detection to inform if shipments remain at rest, or in motion state
- Real-time monitoring of dual temperature, light, shock, tilt, location, motion status
- Real-time alerts to receivers via Email, SMS, APP (Android and iOS)
- Dual system design: PDF report can be downloaded via USB port or remotely through the Frigga cloud platform
- Large-capacity local storage, keep recording and storing data in offline mode. Zero data loss.
- Support auto-flight mode.
- Digital display, easy to use.

Frigga cloud platform provides full real-time supply chain visibility. The platform supports global

use, and provides following services throughout the process:

- Ultra-low temperature monitoring
- Hyper-accurate location
- Real-time dual temperature, light, shock, tilt and location
- Real-time notifications and alarms
- Long-term data storage
- Data analysis report
- Comply with GSP/FDA
- Available on mobile/PC
- Supports auto-flight mode



FRIGGA® V5-(5)-Pro-(Li) SPECIFICATIONS

Usage Type	Multi-Use
Monitor Information	Dual Temperature, Light , Shock, Tilt, Acceleration, Location, Motion
Location Type	Satellite/GPS, A-GPS, self-developed mixed LBS, Wi-Fi
Location Accuracy	Satellite/GPS: 10 m, Wi-Fi Geolocation: 100 m, Cellular Triangulation: 500 m
Temperature Sensor	Internal Temperature Sensor (NIST Traceable)
Temperature Measurement Range	External : -200°C ~ +100°C (-328°F ~ 212°F) Internal : -30°C ~ +70°C (-22°F ~ 158°F)
Temperature Accuracy Range	±0.5°C (-20°C to +40°C); ±1°C for other range
Resolution (Temperature)	0.1°C
Light Sensor Range	0~52,000 Lux, detect whether doors or cartons open
Tilt Resolution	0.1°
Memory Capacity	Max 28,800 readings
Cellular	Global LTE 4G/5G, fallback 2G network.
SIM Card	Internal Embedded (Global Data Roaming)
Shelf Time	12 Months
Use Time	<ul style="list-style-type: none"> • 120 days (120 Min reporting interval) • 60 days (60 Min reporting interval) • 30 days (30 Min reporting interval) • 20 days (20 Min reporting interval) • 10 days (10 Min reporting interval)
Data Logging Interval	10 Min. (settable via platform)
Data Reporting Interval	10 Min. (10/20/30/60/120 Min settable via platform)
Environmental Rating	IP64
Cold Chain PDF Report	Get PDF report via USB2.0/ Frigga cloud platform/Frigga Track (Mobile App)
Dimensions/Weight	103 x 61.3 x 23 mm / 160 grams
Certifications	FCC, CE, RTCA/DO-160G, UN38.3, ROHS, WEEE, EN12830
Storage temperature range	-10°C to +55°C