



## Frigga® V5 Series V5-(7)-Pro-(Li) Real-time Monitor (Multi-use)

Frigga®V5-(7)-Pro-(Li) is a new technological innovation of Frigga. The product offers revolutionary location experience, with accuracy range  $\pm 10m$ , providing customers hyper-accurate location during shipments transit. Additionally, the product supports auto-flight mode.

With Frigga®V5-(7)-Pro-(Li), clients will get full picture of shipment conditions, including temperature, humidity, light, shock, acceleration, tilt, motion status, location and receive immediate alarms in real-time if things go wrong, enabling timely corrective actions to reduce losses.

Frigga®V5-(7)-Pro-(Li) is fully featured, robust, versatile and powerful real-time visibility tool for food supply chain, transportation of high-value commodities, like electronics, chemicals, luxuries, etc.

Integrating self-developed Frigga® Track APP and Frigga® IoT Cloud Platform, clients can easily check and get all the shipment data anywhere at any time they want.



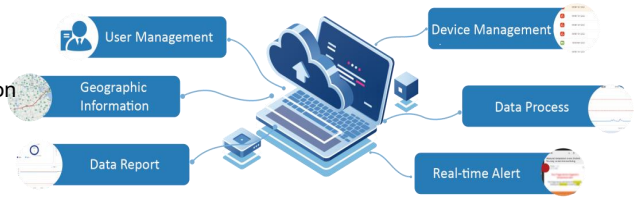
### Key Features and Advantages

- 5-Modal positioning technology, includes Satellite/GPS (GPS, BeiDou, GLONASS), A-GNSS, self-developed mixed LBS, Wi-Fi Position, location accuracy  $\pm 10m$
- 3-axis acceleration detection and analysis, with the range of 0-16G
- 8-level shock detection and analysis
- 3-axis tilt detection and analysis, Resolution 0.1°
- Motion status detection to inform if shipments remain at rest, or in motion state
- Real-time monitoring of temperature, humidity, light, shock, tilt, location, motion status
- Real-time alerts to receivers via Email, SMS, APP (Android and iOS)
- Dual system design: PDF report can be downloaded via USB port or remotely through the Frigga cloud platform
- Large-capacity local storage, keep recording and storing data in offline mode. Zero data loss.
- Digital display, easy to use.
- Supports auto-flight mode.

Frigga cloud platform provides full real-time supply chain visibility. The platform supports global

use, and provides following services throughout the process:

- Hyper-accurate location
- Real-time temperature, humidity, light, shock, tilt, location and motion
- Real-time notifications and alarms
- Long-term data storage
- Data analysis report
- Comply with GSP/FDA
- Available on mobile/PC
- Supports auto-flight mode



### FRIGGA® V5-(7)-Pro-(Li) SPECIFICATIONS

Usage Type	Multi-Use
Monitor Information	Temperature, Humidity, Light , Shock, Tilt, Location, Motion
Location Type	Satellite/GPS, A-GPS, self-developed mixed LBS, Wi-Fi
Location Accuracy	Satellite/GPS: 10 m, Wi-Fi Geolocation: 100 m, Cellular Triangulation: 500 m
Temperature Sensor	Internal Temperature Sensor (NIST Traceable)
Temperature Measurement Range	-30°C to +70°C ( -22°F ~ 158°F)
Temperature Accuracy Range	±0.5°C (-20°C to +40°C); ±1°C for other range
Humidity Measurement Range	5%~95%RH
Humidity Accuracy Range	±3%(20%~80%RH); ±5% for other range
Resolution(Temperature/Humidity)	0.1°C / 1%RH
Light Sensor Range	0~52,000 Lux, detect whether doors or cartons open
Tilt Resolution	0.1°
Memory Capacity	Max 28,800 readings
Cellular	Global LTE 4G/5G, fallback 2G network.
SIM Card	Internal Embedded (Global Data Roaming)
Shelf Time	12 Months
Use Time	<ul style="list-style-type: none"> <li>• 120 days (120 Min reporting interval)</li> <li>• 60 days (60 Min reporting interval)</li> <li>• 30 days (30 Min reporting interval)</li> <li>• 20 days (20 Min reporting interval)</li> <li>• 10 days (10 Min reporting interval)</li> </ul>
Data Logging Interval	10 Min. (settable via platform)
Data Reporting Interval	10 Min. (10/20/30/60/120 Min settable via platform)
Environmental Rating	IP64
Cold Chain PDF Report	Get PDF report via USB2.0/ Frigga cloud platform/Frigga Track (Mobile App)
Dimensions/Weight	103 x 61.3 x 23 mm / 160 grams
Certifications	FCC, CE, RTCA/DO-160G, UN38.3, ROHS, WEEE, EN12830
Storage temperature range	-10°C to +55°C