



Ocean Tracking



Tilt



Shock



Motion



Frigga® V5 Series V5-(C)-Pro-(Li) 5G-60 Real-time Monitor (Single-use)



Frigga®V5-(C)-Pro-(Li) is a new technological innovation from Frigga, it is a comprehensive improvement of modal V5C. The product offers revolutionary location experience, with accuracy range $\pm 10m$, providing customers unparalleled hyper-accurate location during shipments transit.

With Frigga®V5-(C)-Pro-(Li), clients will get full picture of shipment conditions, including temperature, humidity, light, shock, tilt, motion status, location and receive immediate alarms in real-time if things go wrong, enabling timely corrective actions to reduce losses.

Frigga®V5-(C)-Pro-(Li) is fully featured, robust, versatile and powerful real-time visibility tool for food supply chain, transportation of high-value commodities, like electronics, chemicals, luxuries, etc.

Integrating self-developed Frigga® Track APP and Frigga® IoT Cloud Platform, clients can easily check and get all the shipment data anywhere at any time they want.

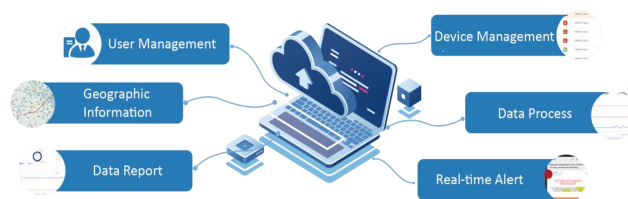
Key Features and Advantages

- 5-Modal positioning technology, includes Satellite (GPS, GLONASS, BeiDou), A-GPS, self-developed mixed LBS, Wi-Fi Position, Ocean Tracking, location accuracy $\pm 10m$
- 3-axis acceleration detection and analysis, with the range of 0-16G
- 8-level shock detection and analysis
- 3-axis tilt detection and analysis, Resolution 0.1°
- Motion status detection to inform if shipments remain at rest, or in motion state
- Incorporate ocean tracking technology to provide on-sea location, ETA/ETD and container status
- Real-time monitoring of temperature, humidity, light, shock, tilt, location, motion status and ETA/ETD (ocean tracking)
- Real-time alerts to receivers via Email, SMS, APP (Android and iOS)
- Dual system design: PDF report can be downloaded via USB port or remotely through the Frigga cloud platform
- Large-capacity local storage, keep recording and storing data in offline mode. Zero data loss.
- Support remote parameter setting, modify alarm threshold, etc.
- Digital display, easy to use.

Frigga® Cloud Platform

Frigga cloud platform provides full real-time supply chain visibility. The platform supports global use, and provides following services throughout the process:

- Hyper-accurate location
- Shipment ETA/ETD, trans-shipments data
- Real-time temperature, humidity, light, shock, tilt and location
- Real-time notifications and alarms
- Long-term data storage
- Data analysis report
- Comply with GSP/FDA
- Available on mobile/PC



FRIGGA® V5-(C)-Pro-(Li) 5G-60 SPECIFICATIONS

Usage Type	Single-Use (Max 60 days)
Monitor Information	Temperature, Humidity, Light , Shock, Tilt, Location, Motion, ETA/ETD (Ocean Tracking)
Location Type	Satellite (GPS, GLONASS, BeiDou), A-GPS, self-developed mixed LBS, Wi-Fi Position, Ocean Tracking
Location Accuracy	Satellite/GPS: 10 m, Wi-Fi Geolocation: 100 m, Cellular Triangulation: 500 m
Temperature Sensor	Internal Temperature Sensor (NIST Traceable)
Temperature Measurement Range	-30°C to +70°C (-22°F ~ 158°F)
Temperature Accuracy Range	±0.5°C (-20°C to +40°C); ±1°C for other range
Humidity Measurement Range	5%~95%RH
Humidity Accuracy Range	±3%(20%~80%RH); ±5% for other range
Resolution(Temperature/Humidity)	0.1°C / 1%RH
Light Sensor Range	0~52,000 Lux, detect whether doors or cartons open
Tilt Resolution	0.1°
Memory Capacity	Max 28,800 readings
Cellular	Global LTE 4G/5G, fallback 2G network.
SIM Card	Internal Embedded (Global Data Roaming)
Shelf Time	12 Months
Use Time	<ul style="list-style-type: none"> • 60 days (60 Min reporting interval) • 30 days (30 Min reporting interval) • 20 days (20 Min reporting interval) • 10 days (10 Min reporting interval)
Data Logging Interval	10 Min. (settable via platform)
Data Reporting Interval	10 Min. (10/20/30/60 Min settable via platform)
Environmental Rating	IP64
Cold Chain PDF Report	Get PDF report via USB2.0/ Frigga cloud platform/Frigga Track (Mobile App)
Dimensions/Weight	103 x 61.3 x 23 mm / 160 grams
Certifications	FCC, CE, RTCA/DO-160G, UN38.3, ROHS, WEEE, EN12830
Storage temperature range	-10°C to +55°C