

Motor101A

Power Cycle Data Logger System



The Motor101A measures and records on and off status changes for motors or other equipment drawing up to 200 Amps. The state change occurs when the current switch exceeds the 150 mA set point. This allows for most basic equipment to be monitored.

The current switch monitors whether there is current passing through a wire around which it is clamped. When the current exceeds 150 mA's, the output changes and provides a voltage for the Motor101A to measure. The device can hold up to 465,578 state changes, but memory will only be used if the status has changed. The device can be programmed to check for status changes 4 times per second up to once every 24 hours.

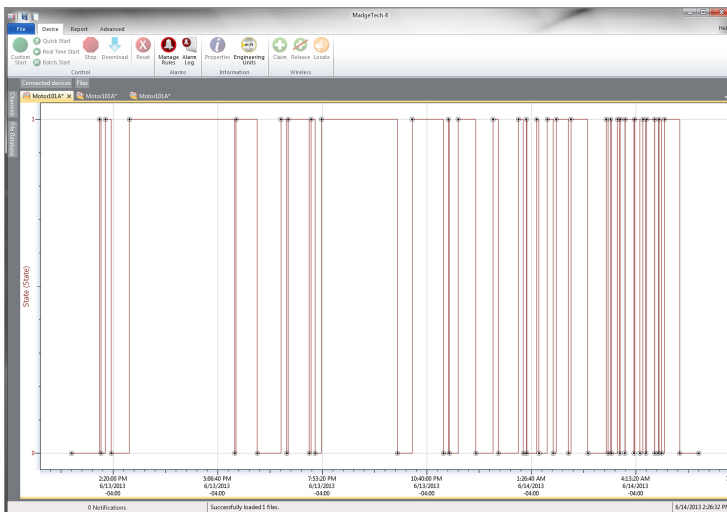
Features

- No External Power Required
- 150 mA Trip Point
- Compatible up to 200 Amps
- Real Time Operation
- Miniature Size
- Reusable
- User-friendly
- Low Cost

Benefits

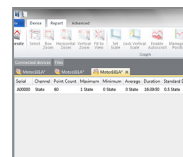
- Simple Setup and Installation
- Minimal Long-Term Maintenance
- Long-Term Field Deployment

MadgeTech 4 Software Features

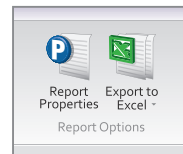


Graph View

- Multiple graph overlay
- Statistics
- Digital calibration
- Zoom in/ zoom out
- Lethality equations (F0, PU)
- Mean Kinetic Temperature
- Full time zone support
- Data annotation
- Min./Max./Average lines
- Summary view



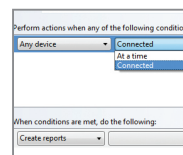
Statistics



Export to Excel

Time	Time Zone	Delta
1:13:37 PM	-0400	-00:00:00
1:18:37 PM	-0400	+00:01:00
1:13:37 PM	-0400	+00:02:00
1:23:37 PM	-0400	+00:03:00
1:13:37 PM	-0400	+00:04:00
1:28:37 PM	-0400	+00:05:00
1:18:37 PM	-0400	+00:06:00
1:23:37 PM	-0400	+00:07:00
1:23:37 PM	-0400	+00:08:00
1:23:37 PM	-0400	+00:09:00
1:23:37 PM	-0400	+00:10:00
1:28:37 PM	-0400	+00:11:00
1:23:37 PM	-0400	+00:12:00
1:23:37 PM	-0400	+00:13:00
1:23:37 PM	-0400	+00:14:00
1:28:37 PM	-0400	+00:15:00

Tabular Data View



Automation

Applications

- Energy Audits
- Equipment Monitoring
- Heating and Cooling Systems
- Fans
- Power Supply On/Off
- Monitoring Gas, Water or Electric Pumps
- Time Studies

SPECIFICATIONS

Specifications are subject to change without notice. Specific warranty remedy limitations apply. Call (603) 456-2011 or go to madgetech.com for details.

MEASUREMENT	
Amperage Range	0.15-200 Amps
Trip Point	0.15 A (150 mA) fixed (200 mA AC for 50 Hz operation)
Status Output (max.)	N.O. 1.0 A @ 30 V AC/DC
Engineering Units	Native measurement units can be scaled to display measurement units of another type such as on/off, open/closed and more

GENERAL	
Housing	Split Core
Start Modes	Immediate start Delay start up to 18 months Multiple pushbutton start/stop
Stop Modes	Manual through software Timed (specific date and time)
Multiple Start/Stop Mode	Start and stop the device multiple times without having to download data or communicate with a PC
Real Time Recording	May be used with PC to monitor and record data in real time
Password Protection	An optional password may be programmed into the device to restrict access to configuration options. Data may be read out without the password.
Memory	465,578 readings; software configurable memory wrap
Wrap Around	Yes
LEDs	2 status LEDs

Reading Rate	4 Hz up to 1 reading every 24 hours
Calibration	Digital calibration through software
Calibration Date	Automatically recorded within device
Battery Type	3.6 V lithium battery included; user replaceable
Battery Life	10 years typical, dependent upon frequency and duty cycle
Data Format	State
Time Accuracy	±1 minute/month at 25 °C (77 °F) (Stand alone mode)
Computer Interface	USB (interface cable required); 115,200 baud
Operating System Compatibility	Windows XP SP3 or later
Software Compatibility	Standard Software version 2.04.06 or later Secure Software version 4.1.6.0 or later
Operating Environment	-15° C to +40° C (5° F to +104° F) 10 %RH to 90 %RH non-condensing
Dimensions	Data Logger: 1.4 in x 2.1 in x 0.6 in (35 mm x 54 mm x 15 mm) Current Switch: 2.1 in x 3.5 in x 1.0 in (54 mm x 89 mm x 26 mm)
Material	Polycarbonate
Weight	0.9 oz (24 g) - Logger only
Approvals	CE

BATTERY WARNING: FIRE, EXPLOSION AND SEVERE BURN HAZARD. DO NOT RECHARGE, DISASSEMBLE, HEAT ABOVE 100 °C (212 °F), INCINERATE, CRUSH, OR EXPOSE CONTENTS TO WATER.

Ordering Information

Motor101A	PN 900381-00	Machinery On/Off Status Data Logging System (includes data logger, current switch and IFC200 interface cable)
IFC200	PN 900298-00	USB interface cable
LTC-7PN	PN 900352-00	Replacement battery for the Motor101A

For Quantity Discounts call (603) 456-2011 or email sales@madgetech.com